

➤➤ Double Glass Door TT4.2

Completely made from stainless steel

Applicable for ventilation of buildings, especially for plants in the field of disposal and supply.

Glass door, double door, ready for installation, completely made from 1.4401 stainless steel (AISI 304), both leaves opening to the outside (in escape direction). The **fixable leaf** is operated by means of a sliding locking bolt.

Door, 70 mm thick, consisting of heat insulating stainless steel compound profiles, dry glazing with toughened safety glass. Fastened to the frame with stable hinge plates, with rubber seal. Mortise dead lock provided for profile double cylinder (which is not included in the supply contract). Material of handle and covers: stainless steel.

Glass retaining strips on one side, machine ground surface finish.

Frame, three- sided, fabricated from heat insulating stainless steel compound profiles, with rubber seal, without step flashing, designed for bolted fixing, including fixing material.

Ordering options:

Door opening options:

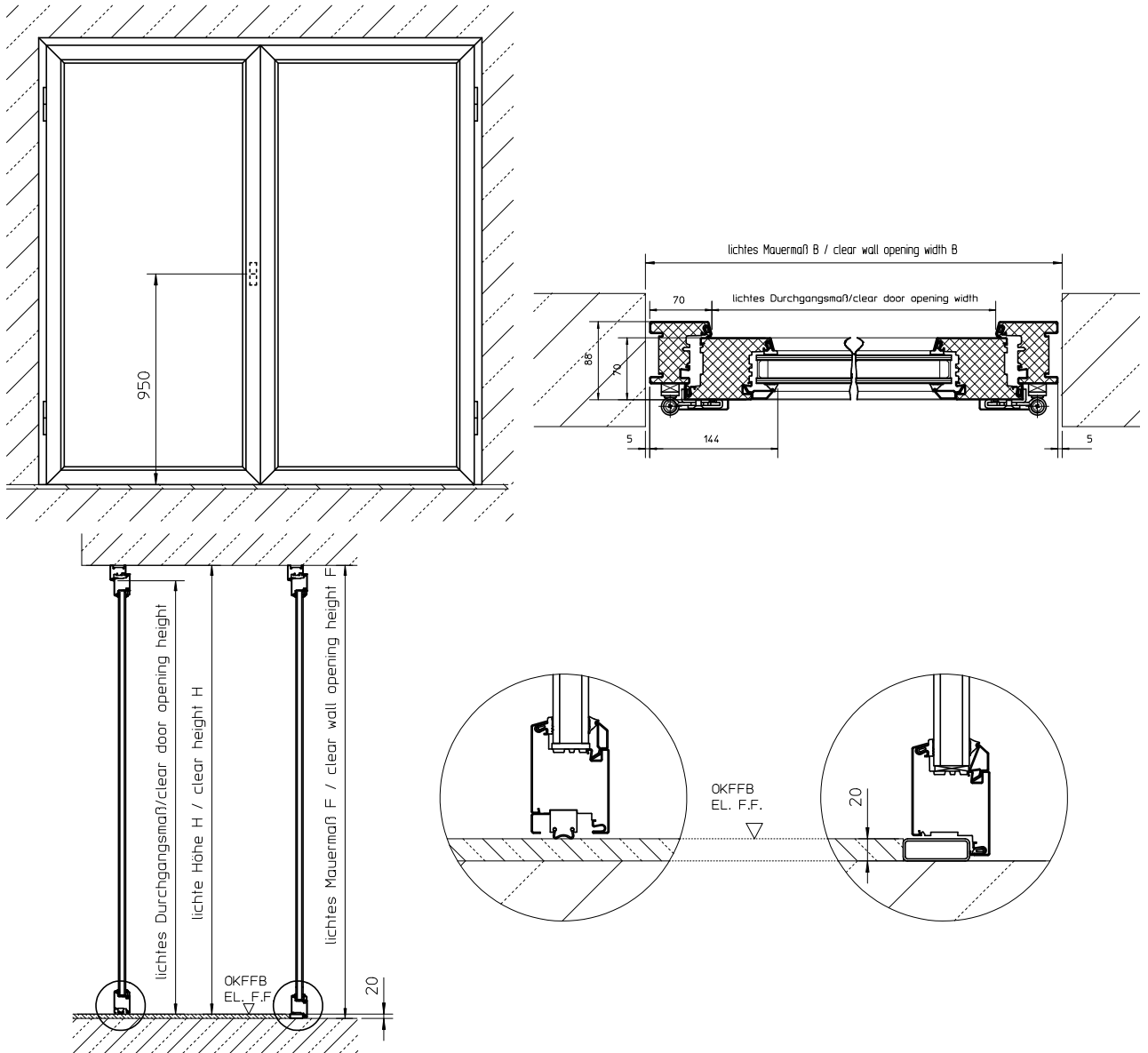
- Hinges on left
- Hinges on right

Special accessories available on request:

- Door handle set, button outside, handle inside
- Surface finish (lacquer)
- Upper door closer
- One-part or two-part door arrestor
- Automatic floor seal

We manufacture to your specifications. Clear wall opening (F) = distance between bottom edge of lintel and top edge of unfinished floor
Clear height (H) = distance between bottom edge of lintel and top edge of finished floor

Installation place	clear width (B)	clear wall opening (F)	clear height (H)



HUBER SE

Industriepark Erasbach A1 · D-92334 Berching
Phone: + 49 - 84 62 - 201 - 0 · Fax: + 49 - 84 62 - 201 - 810
info@huber.de · Internet: www.huber.de

Subject to technical modification
Drawing No. 190.165, 8.2010

Double Glass Door TT4.2